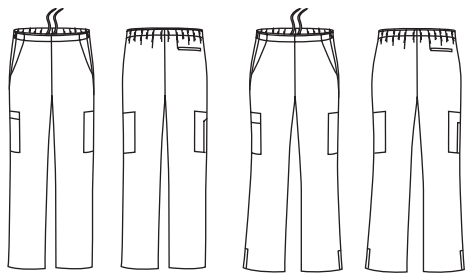


# M9710/ M9720

Mens/Ladies Scrub Pant



**STRETCH FABRIC**

160gsm - 65% Polyester/33% Cotton/2% Elastane.

**STYLE**

- Designed in Australia
- Semi-tapered leg
- 3/4 Back Elastic Waist to flat front with internal waist tie
- 2 side front pockets and one back pocket
- Multi - functional pocket on each leg

**FUNCTION**

- 2 Way Stretch fabric
- Stretch Waist
- Permanent anti-microbial protection
- TrueDry® Cool Effect
- Long life garment freshness
- Easy Care
- Industrial Laundry Compliant

**SIZES**

Mens M9710: XS - 5XL  
Ladies M9720: 2XS - 5XL (6-30)

Please Note:  
These garments are packaged with awareness of sustainable packaging.

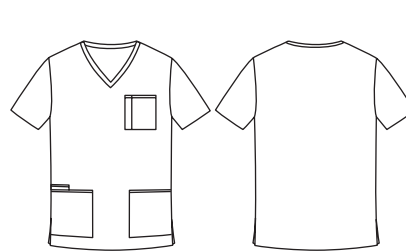
**PAGE**

7.



# M7630

Unisex Scrub Top



**FABRIC**

180gsm - 65% Polyester, 35% Cotton

**STYLE**

Front side pockets, one back pocket and Two cargo pockets. Cord draw string.

**SIZES**

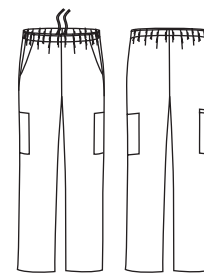
XS - 5XL (8 - 26)

**PAGE**

10

# M9370

Unisex Scrub Pants



**FABRIC**

180gsm - 65% Polyester, 35% Cotton

**STYLE**

Front side pockets, one back pocket and Two cargo pockets. Cord draw string.

**SIZES**

XS - 5XL (8 - 26)

**PAGE**

10

